

[www.ironman4x4.com](http://www.ironman4x4.com)



**SUSPENSION ACCESSORIES CAMPING**



# SHOCK ABSORBER SELECTION

IRONMAN 4X4 OFFER THREE RANGES OF SHOCK ABSORBERS. EACH RANGE IS AVAILABLE IN EITHER SOFT COMFORT, MEDIUM OR PROFESSIONAL VALVING.



**GRC**  
NITRO GAS COMFORT

**GR**  
NITRO GAS

**GRP**  
NITRO GAS PROFESSIONAL

## NITRO GAS SHOCK ABSORBER

Highly versatile performance upgrade from original shock absorbers.

- 35mm piston
- 54mm body
- 16mm piston rod
- Nitrogen gas pressurised
- Twin tube construction



**FEC**  
FOAM CELL COMFORT

**FE**  
FOAM CELL

**FEP**  
FOAM CELL PRO PROFESSIONAL

## FOAM CELL SHOCK ABSORBER

Larger size and capacity suitable for all conditions.

- 40mm piston
- 60mm body
- 18mm piston rod
- Foam cell technology
- Twin tube construction



**FEC PRO**  
FOAM CELL PRO COMFORT

**FE PRO**  
FOAM CELL PRO

**FEP PRO**  
FOAM CELL PRO PROFESSIONAL

## FOAM CELL PRO SHOCK ABSORBER

Maximum size and most robust design suitable for all conditions.

- 45mm piston
- 65-72mm body
- 20mm piston rod
- Foam cell technology
- Twin tube construction



## SUSPENSION KIT TYPES



LEAF / LEAF (LL)



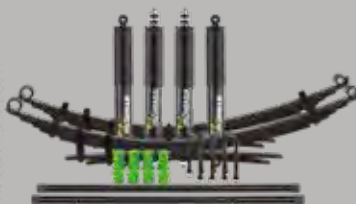
COIL / COIL (CC)



STRUT / LEAF (SL)



STRUT / COIL (SC)



TORSION BAR /  
LEAF (TL)



TORSION BAR /  
COIL (TC)

Please note: Not all coil springs are available in green and some may be supplied in yellow. Please check before ordering.

All prices quoted do not include freight or fitting. Prices quoted are subject to change without notice. Some products may vary depending on vehicle model.

# SUSPENSION KITS

Three Shock Absorber Options

MAKE AND MODEL	Type	Nitro Gas Kit	Foam Cell Kit	Foam Cell Pro Kit
<b>FORD</b>				
Courier	TL	\$1664	\$1901	\$2186
Everest 2015+	SC	\$1105	\$1272	\$1652
Ranger 2011+	SL	\$1747	\$1913	\$2293
Ranger 2006-2011	TL	\$1664	\$1901	\$2186
<b>HOLDEN</b>				
Colorado 2012+	SL	\$1771	\$1936	\$2317
Colorado 2003-2012	TL	\$1664	\$1901	
Colorado 7 / Trailblazer	SC	\$1070	\$1236	\$1616
Jackaroo UBS 25 & 69	TC	\$1093	\$1331	
Rodeo KB, TFS, RA, RA7	TL	\$1664	\$1901	
<b>ISUZU</b>				
D-Max 2012+	SL	\$1771	\$1937	\$2317
D-Max 2003-2012	TL	\$1664	\$1901	
MU-X	SC	\$1070	\$1236	\$1616
<b>JEEP</b>				
Grand Cherokee WG, WJ	CC	\$951		
Grand Cherokee ZG, ZJ	CC	\$951		
Cherokee Liberty KJ	SC	\$1070		
Cherokee XJ	CL	\$1640	\$1878	
Wrangler JK	CC	\$951		\$1474
Wrangler TJ	CC	\$951		
<b>LANDROVER</b>				
Defender County / Dual Cab	CC	\$951	\$1100	\$1364
Range Rover/Discovery	CC	\$951	\$1188	\$1474
<b>MAZDA</b>				
BT50 2011+	SL	\$1747	\$1913	\$2293
BT50 2006-2011	TL	\$1664	\$1901	\$2186
B Series Bravo	TL	\$1664	\$1901	\$2186
<b>MERCEDES BENZ</b>				
G-Wagen	CC	\$1022	\$1260	
G-Wagen G55	CC		\$1260	
X-Class	SC	\$1153	\$1319	\$1699
<b>MITSUBISHI</b>				
Challenger PB/Pajero Sport 2015+	SC	\$1070	\$1236	
Challenger PA	SL	\$1093	\$1331	
Delica, L400	TC	\$1093		
Pajero NM - NX	SC	\$1070		
Pajero NH/NL (Coil)	TC	\$1093	\$1331	
Pajero NH/NL (Leaf)	TL	\$1664	\$1901	
L200/Triton ME - MK	TL	\$1664	\$1901	
Triton ML - MN	SL	\$1640	\$1806	
Triton MQ - MR	SL	\$1782	\$1949	
<b>NISSAN</b>				
Navara NP300 (Coil)	SC	\$1153	\$1319	\$1699
Navara D40 / NP300 (Leaf)	SL	\$1640	\$1806	\$2186
Navara D22	TL	\$1664		
Navara D21	TL	\$1664	\$1901	
Pathfinder R51	SC	\$1070	\$1236	
Pathfinder WD21/Terrano	TC	\$1093	\$1331	

MAKE AND MODEL	Type	Nitro Gas Kit	Foam Cell Kit	Foam Cell Pro Kit
Y62 Patrol	SC	\$1105	\$1272	\$1652
GU Y61 Wagon	CC	\$963	\$1200	\$1485
GQ/GU Cab Chassis (Coil)	CC	\$963	\$1200	\$1485
GU Cab Chassis Y61 (Coil/Leaf)	CL	\$1771	\$2008	\$2293
GQ SWB/LWB	CC	\$951	\$1188	\$1474
GQ Cab Chassis Y60 (Leaf)	LL	\$2376	\$2614	\$2899
Patrol MQ/MK G160	LL	\$2139		
<b>SUZUKI</b>				
Sierra LJ, SJ	LL	\$1592		
Vitara / Grand Vitara	SC	\$1141		
Jimny GJ 2018+	CC	\$1141		
Jimny 1998-2018	CC	\$951		
<b>TOYOTA</b>				
4Runner Gen 3/4/5	TL	\$1070	\$1236	\$1616
4Runner LN 61/YN63 Gen 1	TL	\$1652	\$1889	
FJ Cruiser	SC	\$1070	\$1236	\$1735
Hiace 2005+	TL	\$1711		
Hilux 2015+	SL	\$1687	\$1854	\$2353
Hilux 2005-2015	SL	\$1640	\$1806	\$2270
Hilux LN/RN 107,110,111,167, SR5	TL	\$1664	\$1901	
Hilux LN/RN/YN 65, 105, 106	CL	\$1782	\$2020	
Hilux LN/RN/YN/VZN 130 V6 Gen 2	TC	\$1093	\$1331	
Fortuner 2015+	SC	\$1093	\$1260	\$1759
Landcruiser VDJ/UZJ 200	SC	\$1129	\$1295	\$1628
Landcruiser HDJ/UZJ 100 IFS	TC	\$1200	\$1438	\$1723
Landcruiser HJ/HZJ 80, 105	CC	\$951	\$1188	\$1474
Landcruiser Dual Cab 79	CL	\$1949	\$2186	\$2472
Landcruiser HZJ 78/79	CL	\$1878	\$2115	\$2400
Landcruiser HZJ 76	CL	\$1878	\$2115	\$2400
Landcruiser FJ/HJ/HZJ 75	LL	\$2329	\$2567	\$2852
Landcruiser Bundera LJ 70/73	CC	\$951	\$1188	
Landcruiser FJ/HJ 60,61,62	LL	\$2068	\$2305	\$2590
Landcruiser FJ45, 47	LL	\$2272	\$2709	\$2994
Landcruiser FJ/BJ 40, 42, 46	LL	\$2068	\$2305	\$2590
Prado 90, 95	SC	\$1070	\$1236	\$1616
Prado 120,150	SC	\$1070	\$1236	\$1735
<b>VOLKSWAGEN</b>				
Amarok	SL	\$1640		
<b>OTHER MODELS</b>				
Haval H9	SC	\$1070	\$1236	
Hyundai Terracan	TC	\$1146		
JMC Vigus	SL	\$1640	\$1806	\$2186
LDV T60	SL	\$1794	\$1961	\$2341
Mahindra Pik-Up	TL	\$1652		
Mahindra Scorpio Wagon	TC	\$1105		
SsangYong Musso Q200 / Q201	SC	\$1070		
SsangYong Musso 1996-2006	TC	\$1236	\$1474	

ACHIEVE UP TO 50MM LIFT DEPENDING ON MODEL



## AUSTRALIAN CERTIFIED GVM SUSPENSION UPGRADES

Designed and tested for contractors and tradesmen carrying tools or equipment exceeding original vehicle manufacturer or legal load limits, or for off-roaders fitting a bull bar, winch or long range fuel tank yet still retain load carrying capacity.

The Ironman 4x4 GVM Upgrade will assist in satisfying OH&S, insurance and road transport regulation requirements. Ironman 4x4 has conducted all required testing to ensure complete integration with all safety systems and requirements as well as compliance to Federal laws.

## ***LEGALLY CARRY MORE PAYLOAD***





## TO SUIT:

## Ford Ranger PXI / PXII / PXIII



**+300kg Payload  
= 3500kg GVM**

(CPA47511)

**From \$2964**

## Holden RG Colorado



**+600kg Payload  
= 3500kg GVM**

**From \$3012**

## Isuzu D-Max 2012+



**+550kg Payload  
= 3500kg GVM**

(CPA49748)

**From \$3012**

## Toyota Hilux 2005 - 2015



**+500kg Payload  
= 3350kg GVM**

(CPA44780)

**From \$2855**

## Toyota Hilux 2015 - 2018



**+510kg Payload  
= 3510kg GVM**

(CPA48310)

**From \$3012**

## Toyota Landcruiser 200 Series



**+280kg Payload  
= 3580kg GVM**

**From \$2364**

# KEEP IT LEGAL KEEP IT SAFE

Prices quoted are excluding installation and engineering sign off fee (post registration only)

Installation is only available at an Authorised Ironman 4x4 facility and is subject to state compliance

## Toyota Landcruiser 78/79



**+600kg Payload  
= 3900kg GVM**

(CPA45466)

**From \$3318**



### UPPER CONTROL ARMS

- Optimise wheel alignment at raised ride height
- More clearance for larger tyres and increased lift
- Drop forged alloy construction
- High strength and durable



### SWAY BAR MOUNT KITS

- Stronger than OEM construction
- Stylish anodised billet aluminium design

### ADJUSTABLE TRAILING ARMS

To suit Toyota Landcruiser and Nissan Patrol

- Comp spec solid 32mm
- On car adjustable
- Rubber bushes



### CASTER WEDGE KITS

- Adjusts caster and pinion angle in leaf sprung vehicles



UPPER **\$179 ea**

LOWER **\$226 ea**

## SUSPENSION ALIGNMENT PRODUCTS



### ADJUSTABLE STEERING RODS

- Adjustable length rod to centralise steering wheel after suspension lift

**from \$357**



### ADJUSTABLE PANHARD ROD

- Used to correct axle shift after raising suspension
- Adjustable to re-centralise axle to vehicle



## Load Plus



**\$143 per set**

### LOAD PLUS

Helper Spring Kit

- Progressive and adjustable
- Maximises vehicle payload
- Improves safety and stability
- Economical leaf spring upgrade
- Ideal for light commercial vehicles, 4x4's, utes and vans
- DIY installation





## STRUT ASSEMBLIES

- Pre-assembled to reduce installation time
- No spring compressor required
- Ideal for home installation or busy workshops

from **\$836** per set



## COIL SPRINGS

from **\$214** per set



## ADD-A-LEAF

Ironman 4x4 Add-a-Leaf is a simple, cost effective addition to boost your existing leaf springs

- Maximises vehicle payload
- Improves handling and comfort
- Increases ride height

**\$143** per set



## LEAF SPRINGS

from **\$358** per set



Please note: Not all coil springs are available in green and some may be supplied in yellow. Please check before ordering.

All prices quoted do not include freight or fitting. Prices quoted are subject to change without notice. Some products may vary depending on vehicle model.





## LED INSTANT AWNING

- Premium 280gsm Ripstop
- UV50+ rated poly cotton canvas
- Twist lock poles
- Integrated LED light
- Reflective guy ropes
- 1000D PVC cover



Flexible Nylon Joints



Ripstop Canvas



Reflective Guy Ropes



Light Strip Dimmer

AWNING SIZES: 1.4m L x 2.0m Out

**\$245**

2.0m L x 2.5m Out

**\$270**

2.5m L x 2.5m Out

**\$295**

## AWNING ROOM WITH INSECT NETTING

GET THE BEST OF BOTH WORLDS

- An all in one room with insect netting
- Integrated ceiling and zip away PE floor for easy cleaning
- Attaches via any standard sail track, fastening in place via a zip and heavy duty clips
- Integrated external entry mat, insect protection mesh windows and the option of a verandah on each entry with the use of additional poles and guy ropes
- High performance 300D water resistant Ripstop polyester fabric and seam sealed stitching

**NEW**



2.0m L x 2.5m Out **\$285**

2.5m L x 2.5m Out **\$315**





# AWNING QUICK RELEASE BRACKET

DESIGN REGISTERED AND MADE IN AUSTRALIA

- Allows you to set up camp and drive away, leaving your awning free standing
- Easily swap awning to a different vehicle
- Allows you to store awning off the vehicle when not in use
- Can be used to mount other accessories, such as tradesman tools
- The extra hook kit allows you to mount your awning for use at home as a shelter over a BBQ area, over the kids play area etc, making your awning multi use
- Fits Ironman 4x4 and most other awnings
- Can be padlocked on for security
- Rated up to 35kg



**Quick Release Bracket**

**\$135 twin pk**

**Hook Kit**

**\$65 twin pk**

## AWNING ROOM ENCLOSURE

- Fully enclosed extra room with removable floor for easy cleaning
- Integrated ceiling to help control temperature and reduce condensation
- All openings with insect netting and internal covers

1.4m **\$420**

2.0m **\$450**

2.5m **\$465**



## AWNING MOSQUITO NET

- Four sides plus enclosed ceiling

### NET AND ROOM SIZES:

1.4m Long x 2.0m Out

2.0m Long x 2.5m Out

2.5m Long x 2.5m Out

1.4m **\$155**

2.0m **\$165**

2.5m **\$185**



## AWNING XTRA

### A CONVENIENT ALCOVE

- Built from 280gsm Ripstop poly cotton
- Attaches via any standard sail track
- Gusseted heavy duty clips
- Gusseted eyelets
- UV50+ rated



2.0m L x 1.4m Out **\$150**

2.5m L x 1.4m Out **\$175**



All prices quoted do not include freight or fitting. Prices quoted are subject to change without notice. Some products may vary depending on vehicle model.



**\$1399**



**10 MIN  
SET UP**

## LUXURY ROOFTOP TENT

- Premium 280gsm Ripstop poly cotton canvas, waterproof and breathable
- "Climate cover" flysheet controls temperature and reduces condensation
- All openings with insect mesh and internal covers
- 65mm high density luxury foam mattress
- Heavy duty 1000D waterproof transport cover
- Lightweight aluminium and insulated floor
- 1.4m wide x 2.4m long x 1.3m high (Int.dimensions)
- Heavy duty YKK zips



Comes complete with all tools and step by step instructions required for easy installation

**32L  
CAPACITY**

**\$36**



### ROOF TENT BAG

- 1000D waterproof PVC with heavy duty stitching and YKK zips
- Attach and use via any sail track
- Off ground storage



**\$335**

### ANNEX (sold separately)

- Easily zips onto the main tent
- 1000D waterproof PVC built-in removable floor
- All openings with insect netting mesh and internal covers
- Extension kit available

# WATER TANKS

- UV stabilised polyethylene (LLDPE)
- BPA Free, and FDA approved



Hand Wash not included

- |          |   |          |  |
|----------|---|----------|--|
| <b>1</b> | <b>40L VERTICAL TANK</b><br>1100 W x 75 D x 720mm H*    | <b>6</b> | <b>60L TANK</b><br>845 W x 360 D x 270mm H*            |
| <b>2</b> | <b>50L WHEEL ARCH TANK</b><br>1215 W x 90 D x 590mm H*  | <b>7</b> | <b>50L ROOF RACK TANK</b><br>1200 W x 600 D x 120mm H* |
| <b>3</b> | <b>50L TAPERED TANK</b><br>1000 W x 200 D x 390mm H*    | <b>8</b> | <b>CLEAR TANK HOSE</b><br>1500mm L with Tap            |
| <b>4</b> | <b>40L DOUBLE JERRY CAN</b><br>335 W x 465 D x 340mm H* | <b>9</b> | <b>15L UNDER TRAY TANK</b><br>345 W x 255 D x 305mm H  |
| <b>5</b> | <b>20L JERRY CAN</b><br>170 W x 350 D x 460mm H*        |          |  |

\*Includes height of screw cap



## FIRST AID KITS

Innovative fold out pouch system types of injuries, including:

- Small, medium and large wounds
- Burns
- Snake bite kit
- Sprains and fractures
- CPR

Ideal in a range of environments including home, work, car or 4WD, camping, caravan or boat



**\$189**

**\$99**

All prices quoted do not include freight or fitting. Prices quoted are subject to change without notice. Some products may vary depending on vehicle model.



### DELUXE SOFT ARM CHAIR

- Soft durable arms with high strength steel frame
- Integrated drink holder and insulated pocket in arm
- Handy side utility pocket

**\$69**



### DELUXE LOUNGE CAMP CHAIR

- With extra comfort padding
- Integrated drink holder pocket
- Wide design

**\$92**



**\$81**



### DELUXE HARD ARM CHAIR

- Rear locking tabs lock chair open or closed
- Strong and durable solid arms with high strength steel frame
- Integrated side drink holder

### MID SIZED LOW BACK CAMP CHAIR

- Compact design
- Ideal for festivals and juniors

**\$46**



### QUICK-FOLD CAMPING STEPS

- Non slip glow in the dark treads
- Quick-click double locking legs
- Can be used as entry mat

**\$54**



### QUICK-FOLD TABLE

- Height adjustable
- Rated at 50kg
- Carry bag included

**\$105**





## QUICK-FOLD STRETCHER

### 2 SECOND SET UP

- Heavy duty material construction
- High strength steel frame
- Integrated foot and head padding
- Includes carry bag



**\$146**

## 5° SWAG BAG

- Large sizing:  
235cm (L) x 100cm (W)
- 300gsm cotton canvas
- - 5°C temperature comfort rating
- Dual layer 360gsm lofty hollow fibre with baffles
- Zip 2 bags together to make double sized sleeping bag
- Includes duffle carry bag



**\$152**



**NEW**



**SINGLE**  
900 x 2100mm

**\$405**

**DOUBLE**  
1350 x 2100mm

**\$459**

## SWAGS

- High performance 320gsm Ripstop canvas with insect mesh protection
- Lightweight alloy poles
- 70mm high density mattress
- Internal storage pockets/ external shoe
- Includes heavy duty carry bag



# Ice cube

## FRIDGE / FREEZER

30L, 40L AND 50L



Spring Loaded Handle



3 Internal LED Lights



Front and Top Display



50L  
CAPACITY

**\$925**

40L  
CAPACITY

**\$840**

30L  
CAPACITY

**\$765**

## FRIDGES / FREEZERS

SECOP COMPRESSOR (FORMERLY DANFOSS)

- Digital control panel
- Super bright internal LED light
- Three stage battery protection
- High efficiency, low current draw
- Max and economy modes
- Multi-voltage DC 12-24v and AC 100-240v



74L  
CAPACITY

**\$1260**

LARGE CAPACITY



65L  
CAPACITY

**\$1365**

DUAL COMPARTMENT  
DUAL CONTROL



### FRIDGE BAGS

- Extra insulation
- Side pockets

30/40L

50L

65/74L

**\$103 \$108 \$135**

### FRIDGE SLIDES

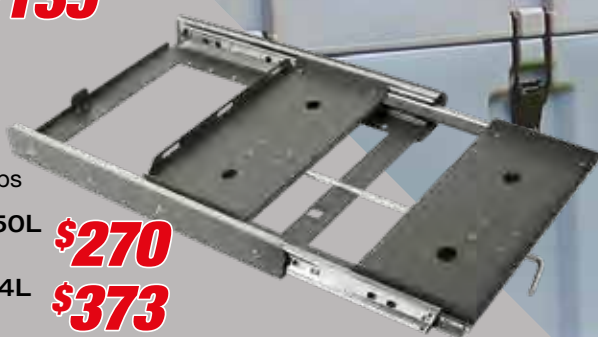
- 100kg rating
- Lock in and lock out slide
- Includes four tie down straps

30/40 AND 50L

**\$270**

65/74L

**\$373**



### WIRELESS LCD FRIDGE THERMOMETER

- Displays internal and ambient temperatures wirelessly
- Up to 50m transmission

**\$31**

### FRIDGE STRAPS

- Lashing capacity of 75kg
- Four straps



**\$31**



**\$52**

### FRIDGE STAND

- Aluminium frame
- 100kg weight capacity
- Adjustable height
- Non slip rubber
- Adjustable, levelling feet





#### LED TENT LIGHT

- Batteries last up to 30 hours at full charge
- 24 x premium white LED's



#### 12V LED LIGHT STRIP

- 1.2m LED light strip
- 3m wire with 12V plug and switch
- 12V socket with battery clips

#### LED LIGHT DIMMER

- Adjust brightness of LED light strips



#### AWNING 12V LED LIGHT STRIP AND DIMMER SET

- 1.2m LED light strip
- 3m wire with 12V plug and switch
- Attaches via sail track
- Dimmable
- IP68 rated



#### MINI LED LANTERN

- Use as a lantern or a torch
- 2 brightness settings, as well as an S.O.S flashing function
- 80m beam distance with CREE LED's



#### LED SENSOR HEADLAMP

- 220 lumens with CREE LED's
- Manual or sensor operation
- 120m beam distance

#### LED LANTERN

- 80m beam distance with bright white CREE LED's
- Multi-function: White light, red light and small LED's
- Includes a flashing S.O.S operation on both white and red lights







**\$39**

### RECHARGEABLE TENT FAN / LED LIGHT

- Dual speed fan and twin setting LED light
- Up to 16 hours fan speed runtime
- Up to 40 hours runtime LED light
- Soft foam, child safe fan blades
- USB recharging point / USB output hub on rear



### MINI LED LANTERN

- Swivel light operation to make a torch or lantern
- Max 180 lumens
- High or low light

**\$40**



**\$67**

### LED WORK LIGHT COMBO (SET OF 2 WORK LIGHTS)

#### FEATURES OF BOTH LIGHTS:

- Magnet for positioning light in work area
- 2 x brightness options, plus a torch function
- Batteries included

#### FEATURES OF LARGER LIGHT:

- USB rechargeable work light

**\$26**

### UNIVERSAL SEAT COVERS

- 100% Nylon universal fit
- Resists mud/grease/water
- Washable





- Easy to clean, removable lid and seat
- Easy to use, hand pump flush
- 12L fresh water storage
- 12L / 20L waste tank
- Double sealed drain valve, prevents leaks and odours
- Self contained toilet with no external connections

#### FLUSH AID



**\$21**



**\$146**

**\$168**

#### BUSH TOILET BAGS

- Bio-degradable replacement bags



**\$12**

**\$103**

#### BUSH TOILET

- Compact design, folds flat
- Galvanised rust-proof steel
- Supports up to 200kg
- Includes carry bag

#### MULTI-PURPOSE WHEEL CARRIER BAG

- Made super strong from 1000D PVC with drain holes for easy cleaning
- Reinforced 50mm webbing straps

**\$81**



**55L CAPACITY**

#### EXPLORER DUFFLE BAG

- 1000D waterproof PVC with side compression straps
- Internal mesh zipper pocket
- Top handles

**\$75**



**65L CAPACITY**

**50L CAPACITY**



**\$35**

#### TOURING CARGO BAG

- Heavy duty, waterproof polyester
- Top and side carry handles
- Durex® buckles



**\$75**



Submerged Pump



Suction Cup / Hook

### RECHARGEABLE OUTDOOR CAMP SHOWER

- Up to 60 mins R/T
- Rechargeable Lithium ion battery
- 2L/min average water flow rate
- Car adaptor/USB charger
- On/off flow control switch

### ECO PRESSURE SHOWER



**\$86**



**12L CAPACITY**

### COLLAPSIBLE FOOD GRADE SILICONE PRODUCTS

- 1.5L Kettle with 304 grade stainless steel
- Tub reduces to 30mm H and tolerates heat up to 100°C
- Bucket reduces to 38mm H

**9L CAPACITY**

**\$37**

**\$16**

**\$39**

**10L CAPACITY**

**\$64**

- Holds stable water pressure for up to 6 mins
- Water temperatures up to 50°C
- Foot pump creates water pressure
- Compact pack flat design

### HAND CLEANER

- Use with or without water
- Soap free and Ph balanced
- Removes dirt, grease, grime, oil and ink.

**\$11**







**\$179**

FISH ANYWHERE WITH THE

**TravelMaster**  
*Multi-Rod*

The ideal lightweight and portable fishing rod, perfect fishing gear for any situation. Nine different rod styles provides the ideal setup for little river fishing through to surf fishing.

#### MALLET, AXE AND AXE/SPLITTER

- Forged carbon steel heads
- Multi-core fiberglass and PVC moulded handle
- Moulded rubber grip for added comfort

Also Available

**TravelMaster**  
*Multi-Rod*

**3x** Prelined  
Spools  
INCLUDED

**\$87**



**\$18**

#### TENT PEG MALLET

- Weight: 0.9kg



**\$23**

#### AXE

- Weight: 0.7kg



**\$68**

#### AXE / SPLITTER

- Weight: (head) 2.0kg



**\$147**

#### 3 PIECE SHOVEL

- Reinforced cushioned PVC handle
- CNC machined joining threads
- Hardened steel post hole blade
- Long shovel / short handled spade
- Tough storage bag

#### 6 PERSON PICNIC SET

- Insulated cooler bag
- 43 Piece set



**\$107**



ON THE GO

POWER

## 44AH PORTABLE POWER PACK

**PROVIDES POWER TO RUN  
12V AND 5V DC APPLIANCES**

- Multiple charging options: 240V AC adaptor
- 12V DC car adaptor - Solar panel via Anderson plug socket
- Digital voltage and amperage meter
- Warning system for low battery capacity
- 12V DC cigarette lighter socket and 12V DC merit socket
- Individual on/off switches with LED indicator
- 5V DC USB port

**\$567****44  
Ah****\$886****120W SOLAR  
MAT KIT**

- 22.5% highly efficient SunPower™ monocrystalline C60 solar cells
- 12V Digital, 5 stage 15A PWM (pulse width modulated) weatherproof controller
- 6 x 20W panels, folding down to 40 x 30cm
- Extremely compact and lightweight

All prices quoted do not include freight or fitting. Prices quoted are subject to change without notice. Some products may vary depending on vehicle model.



**\$365**

### LARGE RECOVERY KIT

- 9m x 8000kg snatch strap
- 20m x 4500kg winch extension
- 3m x 12000kg tree trunk protector
- 5m x 8mm drag chain
- 2 x 4.7t bow shackles
- Snatch block
- Leather gloves
- Kit bag



**\$195**

### SMALL RECOVERY KIT

- 9m x 8000kg snatch strap
- 2 x 4.7t bow shackles
- Rated recovery hitch
- Leather gloves
- Kit bag



RECOVERY  
HOOK

**\$22**



**\$12.50**

LEATHER GLOVES



### TREE TRUNK PROTECTOR

12000kg  
BREAK STRENGTH

**\$48**

### SNATCH STRAPS

8000kg  
BREAK STRENGTH

**\$79**

11000kg  
BREAK STRENGTH

**\$105**



### WINCH EXTENSION

8000kg  
BREAK STRENGTH

**\$69**



**KINETIC SNATCH ROPE**

- Designed to stretch up to 30% providing a safer recovery by reducing shock load
- Manufactured with a high strength nylon 66 (polyamide) double braid cover and abrasion resistant core
- Storage bag included

**SOFT SHACKLES**

- A safer, lightweight, simple to use alternative to steel shackles
- Manufactured from; high strength, low friction, 12 strand single braid, UHMWPE rope
- Storage bag included



**SYNTHETIC WINCH ROPE**  
9.5mm x 27m



**SNATCH BLOCK**



**RECOVERY HITCH**



**DRAG CHAIN**



**BUMPER LIFT KIT**



**TYRE LIFT KIT**



**4.7T BOW SHACKLE**

**TOTAL TRACTION BY TREDS**

- Ultimate recovery traction aide
- Manufactured in Australia



**ALLOY HAWSE**





## 160L/MIN COMPRESSOR



**NEW**

**\$220**

- 12V, 540W motor with 60mm cylinder
- 45A maximum current
- Snap-on quick release fitting
- 8m heat resistant, heavy duty hose with inline pressure gauge/deflator
- Moisture and dust resistant



## 90L/MIN COMPRESSOR



**NEW**

**\$165**

- 12V, 450W motor with 45mm cylinder
- 40A maximum current
- Snap-on quick release fitting
- 8m heat resistant, heavy duty hose with inline pressure gauge/deflator
- Moisture and dust resistant



### PRESSURE GAUGE

- Reading hold function

**NEW**

**\$35**



### SMART DEFLATOR WITH GAUGE

- Quick connect with pressure gauge

**NEW**

**\$60**

### DUAL INFLATOR

- Inflate 2 x tyres at once

**NEW**

**\$85**



### COMPACT DEFLATOR

- Quick connect speedy deflator



**NEW**

**\$35**

### SPEEDY DEFLATOR

- USA Patented
- Accurate and easy to read pressure gauge
- Corrosion resistant

**\$75**



### TYRE GAUGE

- Accurate pressure gauge
- Holds pressure when removed

**\$26**



## TYRE REPAIR KIT

**\$71**

- Emergency puncture repair
- No need to remove tyre
- Quick and easy to use

**\$17**

Self-Vulcanising  
Repair Cords

## UNIVERSAL DIFF BREATHER KIT

SUITABLE FOR DIFF HOUSINGS, TRANSFER CASES, GEAR BOXES AND WINCH MOTORS

### KIT CONTAINS:

- Twin breather manifold with brass filters and hose barbs
- 2 x barb fittings
- 10m oil resistant hose
- 4 x stainless steel hose clamps
- 2 x self drilling screws
- Cable ties

**\$103**



## HIGH VIS FLAG

- Quick disconnect
- 300mm x 290mm Flag
- Meets Australian safety flag requirements
- 3 x 1m rodss, can be used at 1m, 2m or 3m lengths

**\$136**

All prices quoted do not include freight or fitting. Prices quoted are subject to change without notice Some products may vary depending on vehicle model.



# BULL BARS

AUSTRALIAN DESIGNED AND ENGINEERED

- Airbag compatible
- Compatible with vehicle safety systems
- ADR certified and tested
- Designed using 3D scan technology
- Made from highest quality SPHC grade steel (except premium alloy bull bar)
- CNC laser cut and robot welded
- Powdercoated with AKZO NOBEL powder
- LED parker / indicator included
- Aerial and light mounts
- Winch compatible

**COMMERCIAL**  
50mm loop bar

**\$1426**



**COMMERCIAL DELUXE**  
50mm loop bar with fog lights

**\$1804**



**PROTECTOR**  
75mm inner and 50mm outer loop bars

**\$1826**



**PROGUARD NO LOOP**  
Single or triple loops available

**\$1491**



**NEW**

**\$99 pair**

## LED FOG LIGHT UPGRADE

SUIT IRONMAN 4X4 BULL BAR LIGHT PODS

- 2 x 5W high efficiency LEDs
- IP69 rated sealed housing
- Shatterproof polycarbonate lens
- ECE R19 compliance

**PROGUARD SINGLE LOOP**  
includes overrides

**\$270**

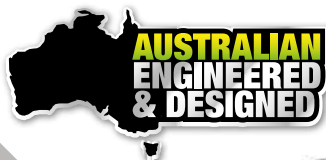


**PROGUARD TRIPLE LOOP**  
includes overrides

**\$324**







Bull bar pricing does not include colour coding



**PREMIUM DELUXE**  
60.3mm loop bar with fog lights

**\$1907**



**PREMIUM ALLOY**  
75mm inner and 50mm outer loop bars

**\$2247**



- Supplied as a pair
- NATA tested and approved
- Compatible with 4.7T shackle

#### TO SUIT:

Ford Ranger / Everest  
Mazda BT50 2011+

**\$300**

Nissan NP300 / D40 Navara 2005+

**\$200**

Holden Colorado 2012+  
Isuzu D-Max 2012+

**\$286**

Mitsubishi MQ Triton 2015 - 2018

**\$265**

Mitsubishi MR Triton / Pajero Sport

**\$300**

Holden Colorado 2016+

**\$350**

Toyota Hilux / Fortuner 2015+

**\$200**

Isuzu MU-X 2014+ Holden  
Colorado 7 / Trailblazer 2012+

**\$286**

Toyota Prado 150 2009+

**\$300**

Toyota Landcruiser 79 2007+

**\$216**

Toyota Landcruiser 200 2007+

**\$200**

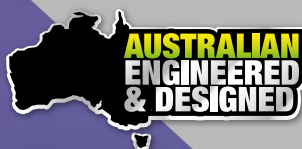


All prices quoted do not include freight or fitting. Prices quoted are subject to change without notice. Some products may vary depending on vehicle model.



# MONSTER WINCH

- Designed to fit most winch compatible bull bars on the market
- High speed balanced motor with sealed bearings
- Repositionable clutch handle
- IP68 rated
- External remote motor breather
- Integrated anti-tamper power cut off
- Fully sealed competition style solenoid
- All in one wireless/plug in controller with LED torch



## WINCH PACKAGE INCLUDES

WINCH DAMPER



WIRELESS /  
PLUG-IN  
CONTROLLER



EXTERNAL  
REMOTE  
BREATHER



COMPETITION  
STYLE SOLENOID





SYNTHETIC ROPE  
AND ALLOY FAIRLEAD

9500lb Winch

**\$999**

12000lb Winch

**\$1099**



STEEL CABLE AND ROLLER FAIRLEAD

9500lb Winch

**\$795**

12000lb Winch

**\$895**





## BLAST *PHASE II*

7" LED SPOT OR SPREAD  
DRIVING LIGHTS

- 4800 raw lumens

**\$198 ea**



## COMET

7" OR 9" LED DRIVING LIGHTS

- 4000 raw lumens

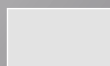
## LED LIGHT COVERS FOR 7" OR 9" LED LIGHTS



- Shatterproof polycarbonate plastic

7" **\$19 ea**

9" **\$24 ea**



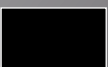
Protective



Fog



Snow



Block Out

## MEGATOM

LED SPOT AND  
LIGHT BAR IN ONE

- Independent operation
- 75W driving light
- 45W light bar

**\$495 ea**



## ECLIPSE

DRIVING LIGHT WITH  
SIDE SHOOTERS

- 7540 raw lumens

**\$220 ea**



**\$330 ea**



## METEOR

7" OR 9" LED DRIVING LIGHTS  
WITH DAYTIME RUNNING LIGHT

- 4000 raw lumens



7" UNIVERSAL LED  
FLOOD OR SPOT

- Interconnectable modular design



LED FOG LIGHT

- Suits Ironman 4x4  
bull bar light pods



LED WORK  
LIGHT

## LED LIGHT BARS

- CREE LEDs
- IP67 and IP69K rated
- Multi-Voltage - 10-30Vdc

**STRAIGHT**

**45W**  
279mm (11")  
3150 Raw Lumens **\$158**

**90W**  
500mm (19.5")  
6300 Raw Lumens **\$210**

**135W**  
722mm (28.5")  
9450 Raw Lumens **\$295**

**180W**  
942mm (37")  
12600 Raw Lumens **\$385**

## CURVED

**180W**  
942mm (37")  
12600 Raw Lumens **\$420**

**135W**  
722mm (28.5")  
9450 Raw Lumens **\$330**

**90W**  
500mm (19.5")  
6300 Raw Lumens **\$245**

**\$145<sup>ea</sup>**



**3" OR 5" UNIVERSAL LED WORKLIGHTS**  
- Each with side shooter spread



**COSMO DUAL LED WORKLIGHT**



**STARBRITE RECHARGEABLE FLOODLIGHT**

All prices quoted do not include freight or fitting. Prices quoted are subject to change without notice. Some products may vary depending on vehicle model.



# SIDE STEPS AND RAILS

- Heavy duty steel construction with black powdercoated finish
- Checkerplate step treads
- Available in standard 50mm or heavy duty premium 60.3mm tube  
(Premium not available on all models)
- Airbag compatible

**Side Steps** **\$773**  
Standard 50mm tube

**Steps / Rails Combo** **\$929**  
Standard 50mm tube

**Side Steps** **\$848**  
Premium 60.3mm tube

**Steps / Rails Combo** **\$1026**  
Premium 60.3mm tube



Side Steps



**STANDARD**  
**50mm TUBE**

Side Steps / Rails Combo



**PREMIUM**  
**60.3mm TUBE**

Side Steps / Rails Combo



**CHECKERPLATE**  
**TREAD**



# AIRFORCE SNORKEL

**\$368**

**5 YEAR  
WARRANTY**



## DESIGNED AND TESTED IN AUSTRALIA

- Raised air intake for cleaner air and safer water crossings
- UV stabilised polyethylene (LLPDE)
- Ram head with built-in rain deflector
- Increased airflow for improve performance
- Dyno tested for improved air intake



**\$35**

**SNORKEL MESH**



# PINNACLE CANOPY BY

**WITH CENTRAL LOCKING REAR WINDOW**

- Reinforced structured design
- Built from vinyl ester fiberglass
- Smooth finish
- Lockable and tinted lift-up windows
- Colour coded - limited range
- Internal sliding front window
- Roof load rating of 80kg
- Marine carpet lining
- Battery LED internal light
- Available for 4x2 and 4x4 dual cab models



Central Locking



Internal Light



Internal Sliding Window



Large Access Windows



**\$2997**

**\$3564****THERMO-PLAS  
CANOPY**

- In-built metal supporting frame
- Built from 9mm ABS plastic
- Smooth finish
- Lockable, tinted lift up windows
- Colour coded - limited range
- Plug and play wiring loom
- Marine carpet lining
- Central locking on some models
- Rear LED stop light on some models
- Available for 4x2 and 4x4 dual cab models



Internal Sliding Window



Gas Strut Openings

**UTE LINER**  
**Tub and Tailgate**

- No drill installation
- 3mm tough polyethylene
- UV stabilised

**\$443****ABS CANOPY MOUNTING  
KITS FOR ROOF RACKS**

- Durable and hard wearing black powdercoated finish
- Suits all steel and alloy roof racks
- Suits Thermo-Plas canopies only





## REAR PROTECTION TOW BAR

PROTECT THE REAR OF YOUR 4X4 UTE WITH AN IRONMAN 4X4 STEEL PROTECTION BAR

- Constructed from 4mm steel, with 8mm tow bar sub frame
- ADR and Australian standards compatible
- Dynamic and static testing to 3500kg
- Integrated tow bar
- Includes tow hitch, pin and 50mm 3500kg tow ball
- Protected trailer and Anderson Plug location
- LED numberplate lights

**\$1161**



## TOWING ACCESSORIES

### TOW BAR WIRING LOOMS

- German made
- CAN bus compatible
- Plug and play
- OEM style connectors
- Includes 7 pin flat plug

**From \$110**

### REAR PROTECTION TOW BAR PLATES

- Provides additional grip when using as a step
- steel construction with a textured black powdercoated finish

**\$119**





Rear protection tow bar pricing does not include colour coding



## HEAVY DUTY TOW BARS

- Compatible with factory rear bumper
- Dynamic and static testing to 3500kg
- Complete with tow hitch, pin and 50mm 3500kg tow ball

**\$523**



Tow Bar with Hitch and Ball



Tow Bar

All prices quoted do not include freight or fitting. Prices quoted are subject to change without notice. Some products may vary depending on vehicle model.



# AIRBAG COMPATIBLE CANVAS SEAT COVERS

TAILOR MADE COMFORT, SUITABLE FOR VEHICLES  
WITH OR WITHOUT SIDE AIRBAGS

- Vehicle specific tailored fit
- Foam backed for extra comfort and protection
- 12oz, 100% cotton natural fibre canvas
- Certified side airbag compatible
- Lumbar support control access
- Built-in map pockets



Strong  
Comfort  
Canvas



Custom Fit



Flame  
Retardant



Water  
Resistant



Long Lasting  
Quality



Maximum  
Vehicle Seat  
Protection



Rear Canvas Seat Covers

Front Set

**\$400 set**

Rear Set

**\$400 set**







## TWIN DRAWER SYSTEMS

- Galvanised steel construction and lined with marine carpet
- Fully assembled
- Complies to ADR3/02, ADR34/01 and ADR42
- T-Lock lockable handles
- Child seat restraint points
- 200kg combined drawer rating

**100KG  
RATING**

### 900mm Twin Drawers

900L x 970W x 275mm H

**\$1242**

### 1000mm Twin Drawers

1000L x 1020W x 275mm H

**\$1307**

### 1300mm Twin Drawers

1300L x 970W x 275mm H

**\$1469**

## SINGLE DRAWER SYSTEM

### 900mm Drawer

900L x 490W x 275mm H

**\$767**

### 1000mm Drawer

1000L x 510W x 275mm H

**\$783**

### 1300mm Drawer

1300L x 490W x 275mm H

**\$891**



**100KG  
RATING**

## WING KITS

- Suits Twin Drawer Systems
- Vehicle specific design
- Lift out panels for easy storage access
- 12mm marine grade ply
- Black powdercoated finish on steel front fascia

900mm and 1000mm L **\$270**

1300mm L **\$351**



All prices quoted do not include freight or fitting. Prices quoted are subject to change without notice. Some products may vary depending on vehicle model.



# DUAL BATTERY SYSTEMS

IDEAL FOR RUNNING ACCESSORIES SUCH AS FRIDGES AND AWNING LIGHTS

## 40 AMP DC TO DC BATTERY CHARGER

- 3-stage 12V booster charger
- Remote charge status LED indicator
- Very low standby current <3mA
- Optional start assist and boost charge features increased amperage output to 80 amp max

**\$513**



## 140 AMP DUAL BATTERY MANAGER

- Fully automatic
- Dual voltage 12 / 24V
- Dual sensing

**\$103**



## START ASSIST BOOSTER KIT

- Automatic emergency vehicle start assist
- Boosts DC to DC charger output to 80 amp

**\$143**



**\$168**



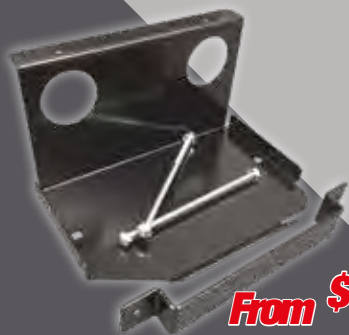
## 12V DIGITAL BATTERY MONITOR

- Can be used on dual or single 12V battery setups
- Auto dimming display

## 275 AMP DUAL BATTERY MANAGER

- Automatic operation with manual override
- Includes in-dash switch

**\$260**



**From \$125**

## BATTERY TRAY

- Folded steel construction
- Black powdercoated finish
- Includes mounting hardware

## TO SUIT:

Ford Ranger 2011+  
Holden Colorado 2016+

Mitsubishi MQ Triton 2015 - 2018  
Toyota Prado 150 2017+

**\$168**



## LED DUAL BATTERY MONITOR

- Displays main and AUX battery voltages
- Auto dimming display

# AUTO ELECTRICS

## ELECTRIC BRAKE CONTROLLER

- Easy adjustment dashboard dial
- Remote hideaway control box
- Mountable at any angle
- Push button override function
- Dual axle capability



**\$205**

## LOW WATER ALARM

- Dash warning light and alarm
- Instant warning of engine coolant loss
- To suit 12 / 24V systems
- Suits plastic or metal header tanks



**\$227**



**\$216**

## AUTO HEADLIGHT ON KIT

- Lights on when vehicle ignition is switched on
- 10 second delay at ignition
- Delay on exit. When the ignition is turned off the lights will stay illuminated for 10 sec



**\$135**

## 50 AMP CHARGE WIRE KIT

- 12V power connector
- 8 B&S cable for high power devices
- 50A connectors and fuse
- 6m x 8mm<sup>2</sup> high current cable
- Heavy duty inline fuse
- Australian made





# UNDERBODY UBP SERIES PROTECTION



THE PREMIUM UNDERBODY PROTECTION SOLUTION TO SAFEGUARD AGAINST OFF-ROAD DAMAGE FROM ROCKS, STUMPS AND GROUND STRIKES



**\$678**

- 4mm fabricated steel
- 3 x more area coverage
- Anti-corrosion coating
- Textured black powdercoated finish
- Airflow ventilation
- Service inspection holes

## UBP TO SUIT:

Ford Ranger PX/PXII/2011+  
Ford Everest 2015+  
Holden Colorado 2011+  
Holden Colorado 7 2011+  
Isuzu D-Max 2011+  
Isuzu MU-X 2012+

Mazda BT50 2011+  
Mitsubishi Triton MQ/ MR 2015+  
Nissan Navara NP300 2015+  
Toyota Hilux 2005+

Toyota Fortuner 2015+  
Toyota Prado 150  
Toyota FJ Cruiser  
Toyota Landcruiser 70 Series  
Ford Ranger PXIII

**\$262**  
**\$476**

# UNDERBODY IUP SERIES PROTECTION

- 2.5-3mm pressed and folded steel
- Easy bolt-on installation
- Semi gloss black powdercoated finish

## IUP TO SUIT:

Ford Ranger / Mazda BT50 2007+  
Ford Everest 2015+  
Holden Colorado / Rodeo 2002-2012  
Isuzu D-Max 2007 - 2012  
Landrover Discovery 3 and 4  
Mitsubishi Pajero 2000+  
Mitsubishi Triton ML/MN/MQ  
Nissan Navara D22 (DIESEL)  
Nissan Navara D40  
Nissan Pathfinder 2005-2013  
Nissan Patrol Y61  
Range Rover Sport 2005+  
Suzuki Grand Vitara 2005+  
Toyota FJ Cruiser 2007+  
Toyota Hilux 2005 - 2015  
Toyota Landcruiser 200  
Toyota Prado 120  
Toyota Prado 150  
Volkswagen Amarok 2009+



**Kits from**  
**\$189**

## LONG RANGE FUEL TANKS

- 5-Day pressure tested
- 2mm Aluminised steel
- Internal baffles
- Black powdercoated finish



**\$1026**

**SALES & FITTING  
AUSTRALIA WIDE**  
THROUGH AUTHORISED OUTLETS



### TO SUIT:

Ford Ranger PX/PXII/PXIII 2011+

Mazda BT50 2011+

Mitsubishi Triton ML/MN

Mitsubishi Triton 2015+

Nissan Navara NP300 2015+

Nissan Navara D40 2005 - 2015

Toyota Hilux 2005+

Toyota Hilux 2015+

Toyota Landcruiser

76 Series 2007 - 11/2012



**from \$1300**

**AUSTRALIAN MADE**

*Diesel*  
**BIG BORE**  
*Exhaust*

- 3" mandrel bent exhaust systems
- Includes dump pipe\*
- Specific diesel catalytic converters
- Stainless steel flex bellows
- Includes resonator
- 1.6mm wall aluminised steel
- Easy to fit

*\*Not included in Navara D40 550. Check with your local distributor for model specifics. Not compatible with DPF systems*



## STEEL ROOF RACK

- Strong steel construction
- Reinforced mesh
- Durable black powdercoated finish

### STEEL

#### Cage Rack 1.4m

1.4m x 1.25m

**\$675**

#### Cage Rack 1.8m

1.8m x 1.25m

**\$708**

#### Cage Rack 2.2m

2.2m x 1.25m

**\$735**

#### Rooftop Tent Rack 1.8m

1.8m x 1.25m

**\$675**

#### Rooftop Tent Rack 2.2m

2.2m x 1.25m

**\$708**

#### Trade Rack 1.8m

1.8m x 1.25m - Open End

**\$675**

#### Trade Rack 2.2m

2.2m x 1.25m - Open End

**\$702**

### STEEL CAGE RACK



### STEEL ROOFTOP TENT RACK



### STEEL TRADE RACK



Spare wheel mount on cage and trade style

## ALLOY ROOF RACK

- 60% weight saving over steel
- Reinforced aluminium mesh
- Durable gunmetal grey powdercoated finish

### ALLOY CAGE RACK



### ALLOY TRADE RACK



### ALLOY

#### Cage Rack 1.4m

1.4m x 1.25m

**\$854**

#### Cage Rack 1.8m

1.8m x 1.25m

**\$999**

#### Cage Rack 2.2m

2.2m x 1.25m

**\$1053**

#### Trade Rack 1.4m

1.4m x 1.25m - Open End

**\$843**

#### Trade Rack 1.8m

1.8m x 1.25m - Open End

**\$983**

#### Trade Rack 2.2m

2.2m x 1.25m - Open End

**\$1032**

## ROOF RACK MOUNTING KITS

- Durable powdercoated black finish
- Suits all steel and alloy roof racks
- Gutter mounting kits available in various heights



**From \$171**

### TO SUIT:

Holden Colorado / Trailblazer (suits OE rails)  
Isuzu MU-X LS-T  
Mercedes Benz G-Wagen  
Nissan Patrol GQ and GU  
Toyota Landcruiser 100, 105, 60, 80, 79 d/cab, 76 200  
Toyota Prado 90, 95, 120, 150





UV50+ Buckles



Heavy Duty Zips


**\$182**
**200L  
CAPACITY**

1400L x 500W x 300mm D

**\$205**
**250L  
CAPACITY**

1100L x 800W x 300mm D

**\$238**
**350L  
CAPACITY**

1200L x 960W x 300mm D

**\$281**
**500L  
CAPACITY**

1500L x 1100W x 300mm D

**\$303**
**600L  
CAPACITY**

1800L x 1100W x 300mm D

## WEATHERPROOF ROOF TOP CARGO BAGS

### FREE UP VALUABLE BOOT SPACE

- Weatherproof, reinforced tear resistant fibre, constructed from 500D PVC tarpaulin
- Velcro water resistant zipper overlap provides protective shield from weather
- Heavy duty webbing straps, zips and UV50+ buckles
- Additional straps and buckles at the front reduce flapping and wind noise
- Advanced water resistant welded seams

All prices quoted do not include freight or fitting. Prices quoted are subject to change without notice. Some products may vary depending on vehicle model.



**\$265**

**100L**  
CAPACITY

700 W x 460 D x 410mm H

**\$211**

**60L**  
CAPACITY

550 W x 460 D x 335mm H



Removable tool / storage tray not included in 48L

**\$335**

**140L**  
CAPACITY

915 W x 460 D x 440mm H

**\$168**

**48L**  
CAPACITY

410W x 410 D x 410mm H

\*Removable storage tray not included

**\$431**

**216L**  
CAPACITY

1300 W x 460 D x 460mm H

- Manufactured from tough LLDPE UV 3.6mm stabilised plastic
- Dust and water resistant - safe for tools, camping gear and electronic equipment
- Lockable heavy duty latches

- Heavy duty spring loaded handles / tie down points
- Removable tool / storage tray\*
- Strap over points for added security when in transit
- Interlocking stackable design



- High profile sits above ute rail
- Heavy duty double lock
- Waterproof and dust proof
- Heavy duty with stay open lid

**140L**  
CAPACITY

**\$594**



**UTE BOX**

1320 x 505 x 475mm

**UTE BOX EXTRA**

1400 x 540 x 540mm

**200L**  
CAPACITY

**\$621**



# ALUMINIUM TOOL BOXES

- Powdercoated white
- T-Lock handles
- Stainless steel piano hinges
- Twin doors
- Gas struts
- Lock water caps

## UNDER-TRAY BOX

- Left or right
- Water cap on lock

LEFT



**\$270 ea**

750 / 520 x 270 x 440mm

RIGHT



## LOW PROFILE

- Stainless piano hinge
- Water caps on locks



**\$519**

950 x 600 x 500mm



**\$659**

1250 x 600 x 500mm

## GULL WING TRUCK BOX

- Twin door

**\$713**

1770 x 550 x 400mm



## ONE-TONNER

- Stainless piano hinge
- Water caps on locks

**\$659**

900 x 500 x 680mm



**\$785**

1210 x 500 x 680mm



# STEEL TOOL BOXES

## STEEL TRUCK BOX

- Powdercoated white finish
- Sealed bearing on slides
- Heavy duty side handles
- Fully welded
- T-Lock handles

**\$1485**

1210 x 640 x 750mm



**\$1037**

700 x 640 x 750mm





# STEEL AND HEAVY DUTY ALLOY TRAYS

HEAVY DUTY SOLUTIONS

## ALLOY TRAYS

- 3mm thick checkerplate floor
- 2mm thick galvanised drop sides and tailgate
- 300mm high drop sides
- 75mm diameter mandrel bent headboard pipe
- Anti-rattle adjustable locking hinges
- Constructed with high-tensile bolts and nyloc nuts



## FLEET TRAYS

by Ironman 4x4

### 12V LED REAR TRAY LIGHT/ COMBINATION LED TAIL LIGHT

- Combination LED tail light features, stop light, tail light, indicator, reverse light and reflector
- Universal fit
- ADR and ECE compliant
- 44 high power LED's
- Rated to IP69
- Sold individually

**\$99 ea**



275 L x 95 H x 50mm W

## STEEL TRAYS

- Durable white powdercoated finish
- 3mm thick checkerplate floor
- 2mm thick galvanised drop sides and tailgate
- 300mm high drop sides
- 75mm diameter mandrel bent headboard pipe
- Anti-rattle adjustable locking hinges
- Constructed with high-tensile bolts and nyloc nuts

*Please contact your local distributor for further information.*



# MINING

## AND FLEET



### WHEEL CHOCKS

- Includes storage rack
- Textured surface prevents slipping
- Manufactured from UV stable urethane

**\$107**



### LED HI-VIS LIGHT BAR

- Reverse alarm
- Strobe style LED beacon
- Stop, tail, indicator and reverse function

**\$449**



**\$594**

### REVERSE CAMERA

- OE Approved
- Rear view mirror replacement

**NEW**

### EMBOSSED MUD FLAPS

- Manufactured from premium grade rubber
- Heavy duty to outlast extreme conditions

**NEW**



**\$60 pair**

### BATTERY ISOLATOR / JUMP START SWITCH

- Heavy duty design
- Includes Anderson plug connection

**\$297**



### HIGH MOUNT FLAG WITH RED LED

- Available in 1.8m and 2.4m

**\$146**

**\$152**



### SAFETY TRIANGLE

- Set of 3 heavy duty triangles
- High visibility
- Complies with Australian standards AS3790-1992

**\$86**





**\$33**

ADVENTURE  
CHALLENGE WA

## DVD'S

- Join Penny Wells and the Discover Oz Crew as they explore Australia's remote regions. Vol: 2, 3, 4, 5 and 6 available.
- Ironman 4x4 Adventure Challenge WA 2012, 2013, and 2014 DVD's

DISCOVER OZ  
PRODUCTIONS  
TOP OF DOWN UNDER



**\$40**

## THE AUSTRALIAN 4WD HANDBOOK

- Limited edition
- Complete off-road bible

How to's, driving techniques, recovery, accessories, navigation and communication, modern vehicle types and environments

**\$48**



**\$13**

## DRINK BOTTLES

- 600ml Stainless steel
- Integrated straw



## KEYRINGS

**\$2.16**



**\$2.16**

## DRINK HOLDERS

**\$4**



## CAR AIR FRESHENER

**\$1**



**NEW**

CAP

**\$11**



## OIL SKIN JACKETS AND VESTS

### COOPER JACKET

- Quality 12oz. oilskin
- Heavy duty YKK zips
- Nubuck leather lined collar
- Detachable hood
- Two way pockets and map zip pocket
- Underarm eyelets for ventilation
- Adjustable waist draw cord

**\$287**



### CAPRICORN VEST

- Quality 12oz. oilskin
- Heavy duty YKK zips
- Nubuck leather lined collar
- Generous sizing and fit
- Large pockets with adjustable side tabs
- Nylon weather shield around waist

**\$173**

Sizes Available: S, M, L, XL, XXL, XXXL, XXXXL



# — COMPLETE VEHICLE — SOLUTIONS



- Commercial Deluxe Bull Bar
- Monster Winch
- Rated Recovery Points
- Underbody Protection
- LED Driving Lights
- Suspension Upgrade
- Long Range Fuel Tank
- Side Steps and Rails
- Rear Protection Tow Bar
- Airforce Snorkel
- Thermo-Plas Canopy
- Air Compressor
- Ute Liner
- Recovery Kit
- Twin Drawer System
- Electric Brake Controller
- Dual Battery System
- Canvas Seat Covers



#### VICTORIA

2-8 Bessemer Drive,  
Dandenong South, VIC 3175

#### NEW SOUTH WALES

22 Yilen Close,  
Beresfield, NSW 2322

#### QUEENSLAND

150 Robinson Road East,  
Geebung, QLD 4034

#### SOUTH AUSTRALIA

36 Millers Road,  
Wingfield, SA 5013

#### WESTERN AUSTRALIA

Cnr Baile Road and Craft Street,  
Canning Vale, WA 6155

PRODUCTS AVAILABLE FROM OVER 800 STORES AUSTRALIA-WIDE  
FOR YOUR NEAREST DISTRIBUTOR, CALL 1300 731 137 OR VISIT US AT:  
**[www.ironman4x4.com](http://www.ironman4x4.com)**



Find us on Facebook  
[facebook.com/Ironman4x4au](https://facebook.com/Ironman4x4au)

Prices do not include freight or fitting. Prices are subject to change without notice. Colours and styles may vary to those displayed. Some products may vary depending on vehicle model. Our goods come with guarantees that cannot be excluded under the Australian Consumer Law.

You are entitled to a replacement or refund for a major failure and for compensation for any other reasonably foreseeable loss or damage. You are also entitled to have the goods repaired or replaced if the goods fail to be of acceptable quality and the failure does not amount to a major failure. E&OE.

©Copyright 2019 Ironman 4x4 Pty Ltd. No part of this publication may be reproduced or replicated without the prior written consent of Ironman 4x4 Pty Ltd.